

# PENTHOUSE A

15TH FLOOR

4+ BEDROOMS / 6 BATHROOMS / 1 POWDER ROOM

Total Living: 10,287 Sq Ft / 955.7 Sq M

Indoor: 6,400 Sq Ft / 594.6 Sq M

Alero: 3,887 Sq Ft / 361.1 Sq M



← Beach

Bay →



This is not an offer to sell, or solicitation of offers to buy, the condominium units in states where such offer or solicitation cannot be made. This offering is made only by the offering documents for the condominium and no statement should be relied upon if not made in the offering documents. Stated dimensions are measured to the exterior boundaries of the exterior walls and the centerline of interior demising walls and in fact vary from the dimensions that would be determined by using the description and definition of the "Unit" set forth in the Declaration (which generally only includes the interior airspace between the perimeter walls and excludes interior structural components). For your reference, the area of the Unit, determined in accordance with those defined unit boundaries, is 5,833 sq ft. Note that measurements of rooms set forth on this floor plan are generally taken at the greatest points of each given room (as if the room were a perfect rectangle), without regard for any cutouts. Accordingly, the area of the actual room will typically be smaller than the product obtained by multiplying the stated length times width. All dimensions are approximate and may vary with actual construction, and all floor plans and development plans are subject to change.

# PENTHOUSE B

15TH FLOOR

3 BEDROOMS / 4 BATHROOMS / 1 POWDER ROOM

Total Living: 6,970 Sq Ft / 647.5 Sq M

Indoor: 4,243 Sq Ft / 394.2 Sq M

Alero: 2,727 Sq Ft / 253.3 Sq M



← Beach

Bay →



This is not an offer to sell, or solicitation of offers to buy, the condominium units in states where such offer or solicitation cannot be made. This offering is made only by the offering documents for the condominium and no statement should be relied upon if not made in the offering documents. Stated dimensions are measured to the exterior boundaries of the exterior walls and the centerline of interior demising walls and in fact vary from the dimensions that would be determined by using the description and definition of the "Unit" set forth in the Declaration (which generally only includes the interior airspace between the perimeter walls and excludes interior structural components). For your reference, the area of the Unit, determined in accordance with those defined unit boundaries, is 5,833 sq ft. Note that measurements of rooms set forth on this floor plan are generally taken at the greatest points of each given room (as if the room were a perfect rectangle), without regard for any cutouts. Accordingly, the area of the actual room will typically be smaller than the product obtained by multiplying the stated length times width. All dimensions are approximate and may vary with actual construction, and all floor plans and development plans are subject to change.

# PENTHOUSE

16TH & 17TH FLOORS / DUPLEX

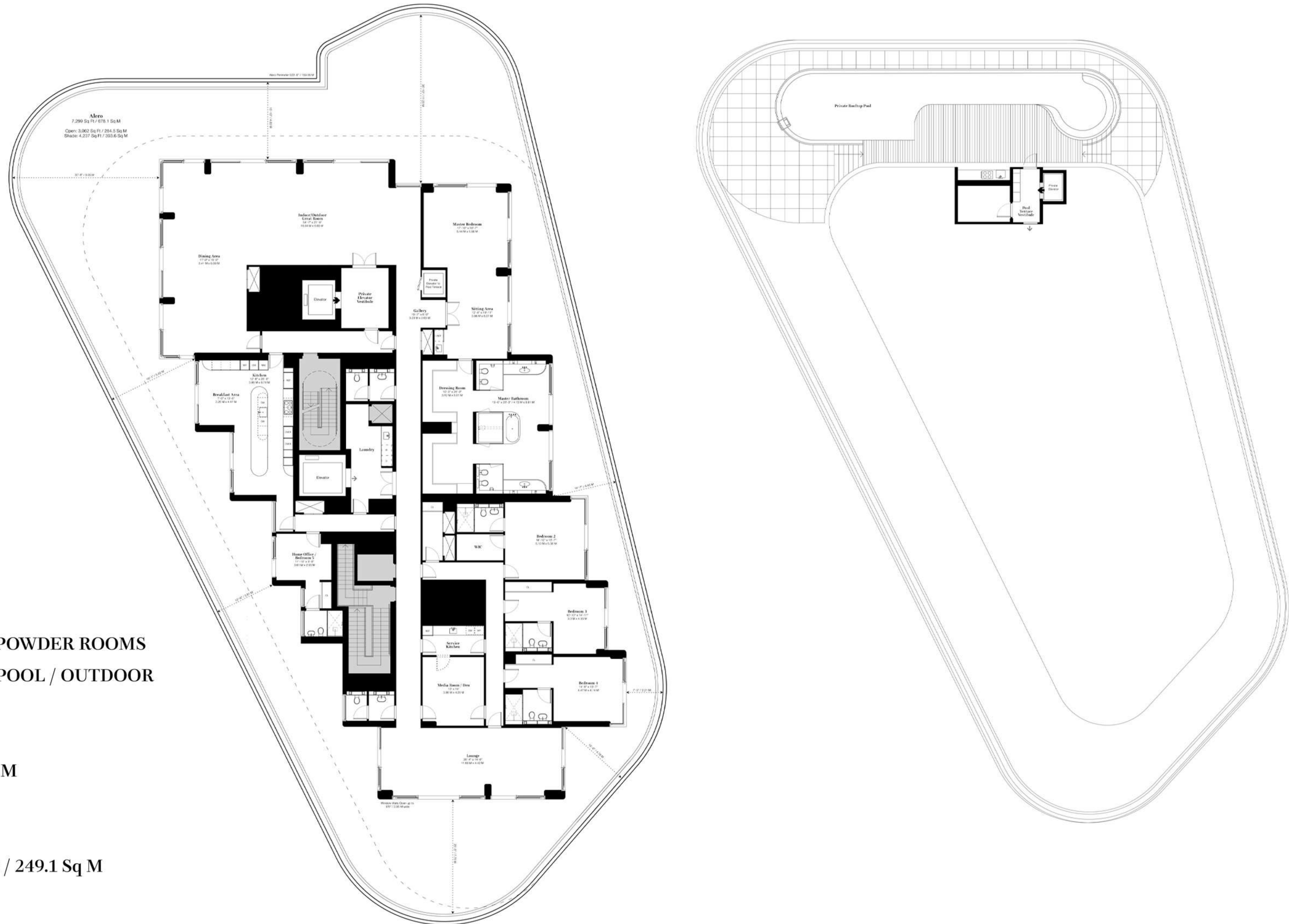
4+ BEDROOMS / 5 BATHROOMS / 2 POWDER ROOMS  
PRIVATE ELEVATOR TO ROOFTOP POOL / OUTDOOR  
KITCHENETTE

Total Living: 18,253 Sq Ft / 1,695.8 Sq M

Indoor: 8,273 Sq Ft / 768.6 Sq M

Alero: 7,299 Sq Ft / 678.1 Sq M

Private Rooftop with Pool: 2,681 Sq Ft / 249.1 Sq M



This is not an offer to sell, or solicitation of offers to buy, the condominium units in states where such offer or solicitation cannot be made. This offering is made only by the offering documents for the condominium and no statement should be relied upon if not made in the offering documents. Stated dimensions are measured to the exterior boundaries of the exterior walls and the centerline of interior demising walls and in fact vary from the dimensions that would be determined by using the description and definition of the "Unit" set forth in the Declaration (which generally only includes the interior airspace between the perimeter walls and excludes interior structural components). For your reference, the area of the Unit, determined in accordance with those defined unit boundaries, is 5,833 sq ft. Note that measurements of rooms set forth on this floor plan are generally taken at the greatest points of each given room (as if the room were a perfect rectangle), without regard for any cutouts. Accordingly, the area of the actual room will typically be smaller than the product obtained by multiplying the stated length times width. All dimensions are approximate and may vary with actual construction, and all floor plans and development plans are subject to change.

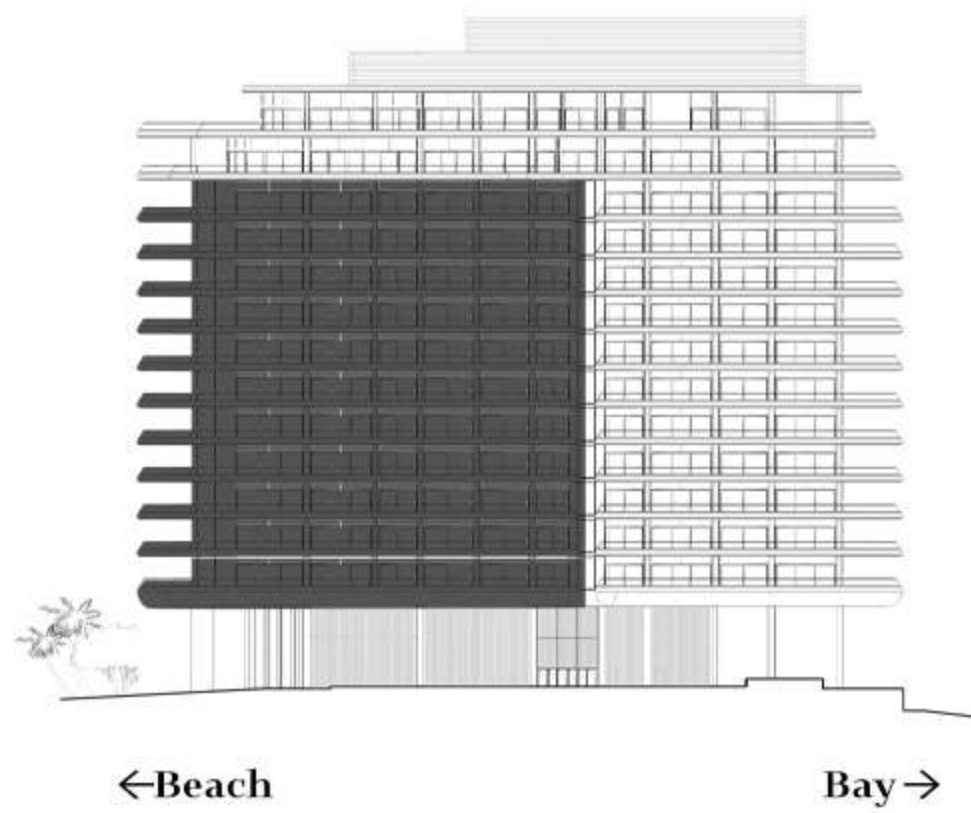
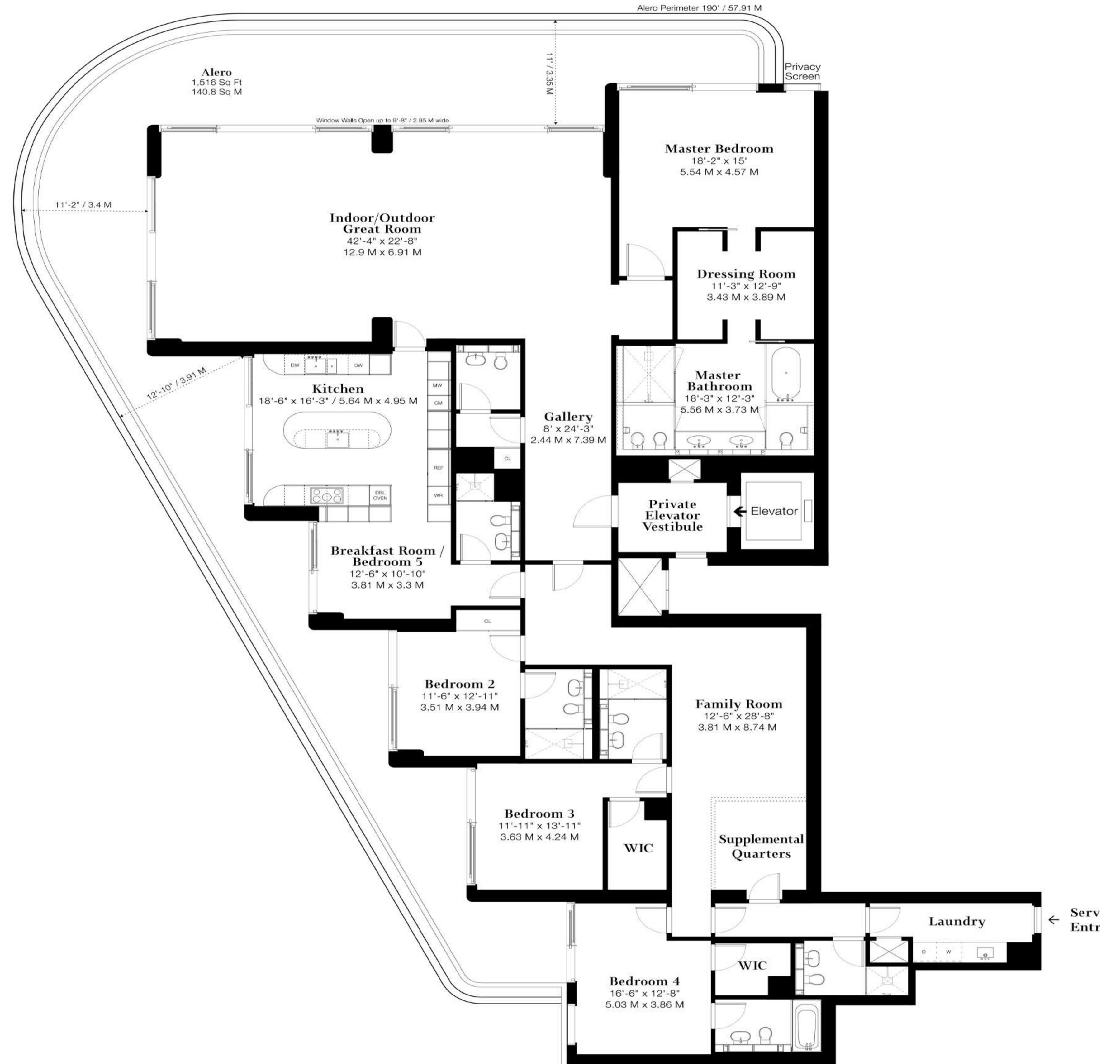
# RESIDENCE A

4+ BEDROOMS / 6 BATHROOMS / 1 POWDER ROOM

Total Living: 6,246 Sq Ft / 580.2 Sq M

Indoor: 4,730 Sq Ft / 439.4 Sq M

Alero: 1,516 Sq Ft / 140.8 Sq M



This is not an offer to sell, or solicitation of offers to buy, the condominium units in states where such offer or solicitation cannot be made. This offering is made only by the offering documents for the condominium and no statement should be relied upon if not made in the offering documents. Stated dimensions are measured to the exterior boundaries of the exterior walls and the centerline of interior demising walls and in fact vary from the dimensions that would be determined by using the description and definition of the "Unit" set forth in the Declaration (which generally only includes the interior airspace between the perimeter walls and excludes interior structural components). For your reference, the area of the Unit, determined in accordance with those defined unit boundaries, is 5,833 sq ft. Note that measurements of rooms set forth on this floor plan are generally taken at the greatest points of each given room (as if the room were a perfect rectangle), without regard for any cutouts. Accordingly, the area of the actual room will typically be smaller than the product obtained by multiplying the stated length times width. All dimensions are approximate and may vary with actual construction, and all floor plans and development plans are subject to change.

# RESIDENCE B

4+ BEDROOMS / 5 BATHROOMS / 1 POWDER ROOM

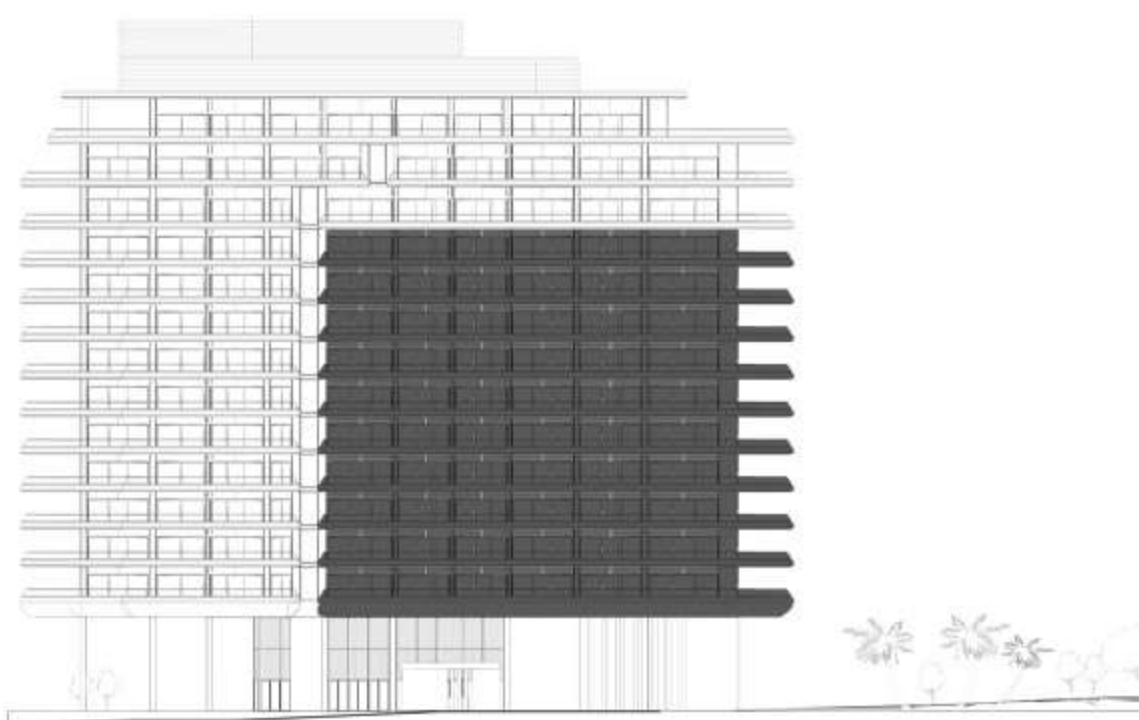
Total Living: 5,466 Sq Ft / 507.8 Sq M

Indoor: 4,165 Sq Ft / 386.9 Sq M

Alero: 1,301 Sq Ft / 120.9 Sq M



Alero Perimeter  
170'-5" / 51.9 M



← Bay

Beach →



This is not an offer to sell, or solicitation of offers to buy, the condominium units in states where such offer or solicitation cannot be made. This offering is made only by the offering documents for the condominium and no statement should be relied upon if not made in the offering documents. Stated dimensions are measured to the exterior boundaries of the exterior walls and the centerline of interior demising walls and in fact vary from the dimensions that would be determined by using the description and definition of the "Unit" set forth in the Declaration (which generally only includes the interior airspace between the perimeter walls and excludes interior structural components). For your reference, the area of the Unit, determined in accordance with those defined unit boundaries, is 5,833 sq ft. Note that measurements of rooms set forth on this floor plan are generally taken at the greatest points of each given room (as if the room were a perfect rectangle), without regard for any cutouts. Accordingly, the area of the actual room will typically be smaller than the product obtained by multiplying the stated length times width. All dimensions are approximate and may vary with actual construction, and all floor plans and development plans are subject to change.

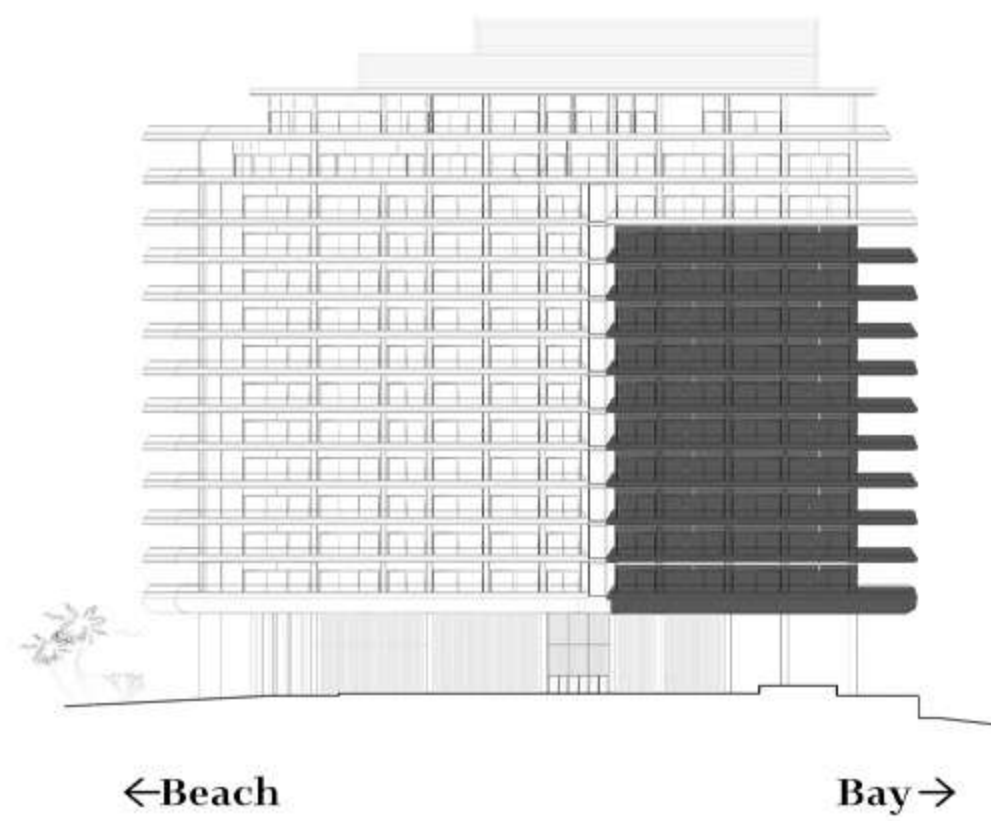
# RESIDENCE C


2 BEDROOMS / 2 BATHROOMS / 1 POWDER ROOM

Total Living: 3,428 Sq Ft / 318.5 Sq M

Indoor: 2,238 Sq Ft / 207.9 Sq M

Alero: 1,190 Sq Ft / 110.6 Sq M



 This is not an offer to sell, or solicitation of offers to buy, the condominium units in states where such offer or solicitation cannot be made. This offering is made only by the offering documents for the condominium and no statement should be relied upon if not made in the offering documents. Stated dimensions are measured to the exterior boundaries of the exterior walls and the centerline of interior demising walls and in fact vary from the dimensions that would be determined by using the description and definition of the "Unit" set forth in the Declaration (which generally only includes the interior airspace between the perimeter walls and excludes interior structural components). For your reference, the area of the Unit, determined in accordance with those defined unit boundaries, is 5,833 sq ft. Note that measurements of rooms set forth on this floor plan are generally taken at the greatest points of each given room (as if the room were a perfect rectangle), without regard for any cutouts. Accordingly, the area of the actual room will typically be smaller than the product obtained by multiplying the stated length times width. All dimensions are approximate and may vary with actual construction, and all floor plans and development plans are subject to change.

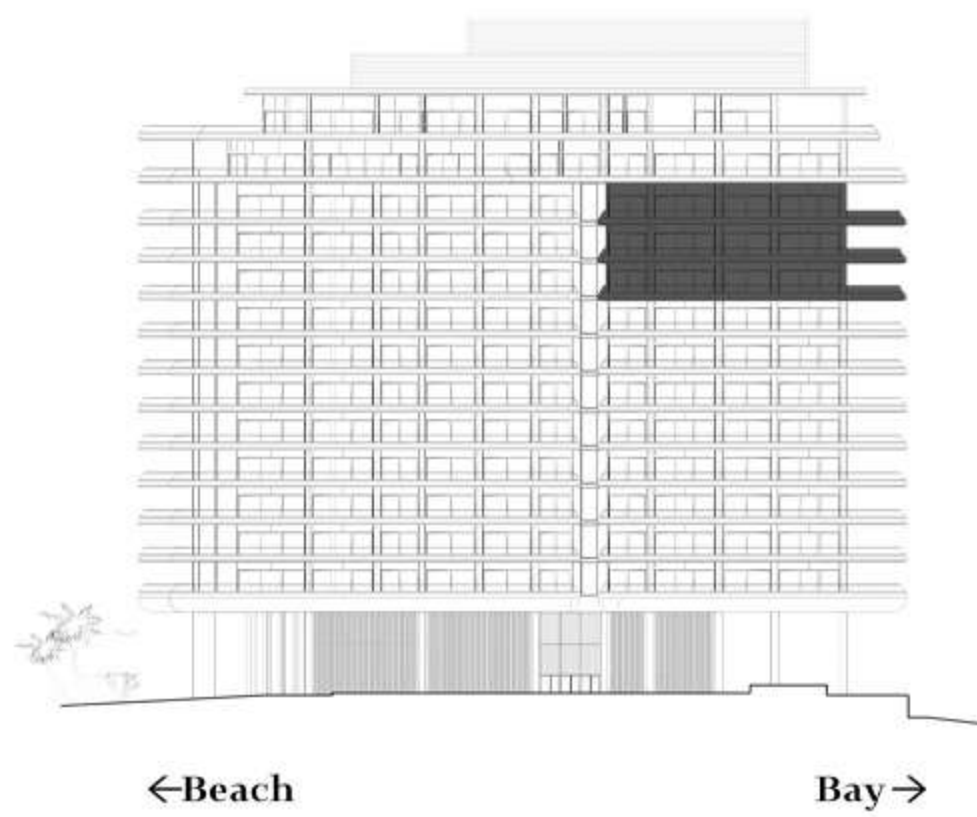
# RESIDENCE CD

3 BEDROOMS + STUDY / 3 BATHROOMS / 1 POWDER ROOM

Total Living: 5,254 Sq Ft / 488.1 Sq M

Indoor: 3,644 Sq Ft / 338.5 Sq M

Alero: 1,610 Sq Ft / 149.6 Sq M



This is not an offer to sell, or solicitation of offers to buy, the condominium units in states where such offer or solicitation cannot be made. This offering is made only by the offering documents for the condominium and no statement should be relied upon if not made in the offering documents. Stated dimensions are measured to the exterior boundaries of the exterior walls and the centerline of interior demising walls and in fact vary from the dimensions that would be determined by using the description and definition of the "Unit" set forth in the Declaration (which generally only includes the interior airspace between the perimeter walls and excludes interior structural components). For your reference, the area of the Unit, determined in accordance with those defined unit boundaries, is 5,833 sq ft. Note that measurements of rooms set forth on this floor plan are generally taken at the greatest points of each given room (as if the room were a perfect rectangle), without regard for any cutouts. Accordingly, the area of the actual room will typically be smaller than the product obtained by multiplying the stated length times width. All dimensions are approximate and may vary with actual construction, and all floor plans and development plans are subject to change.

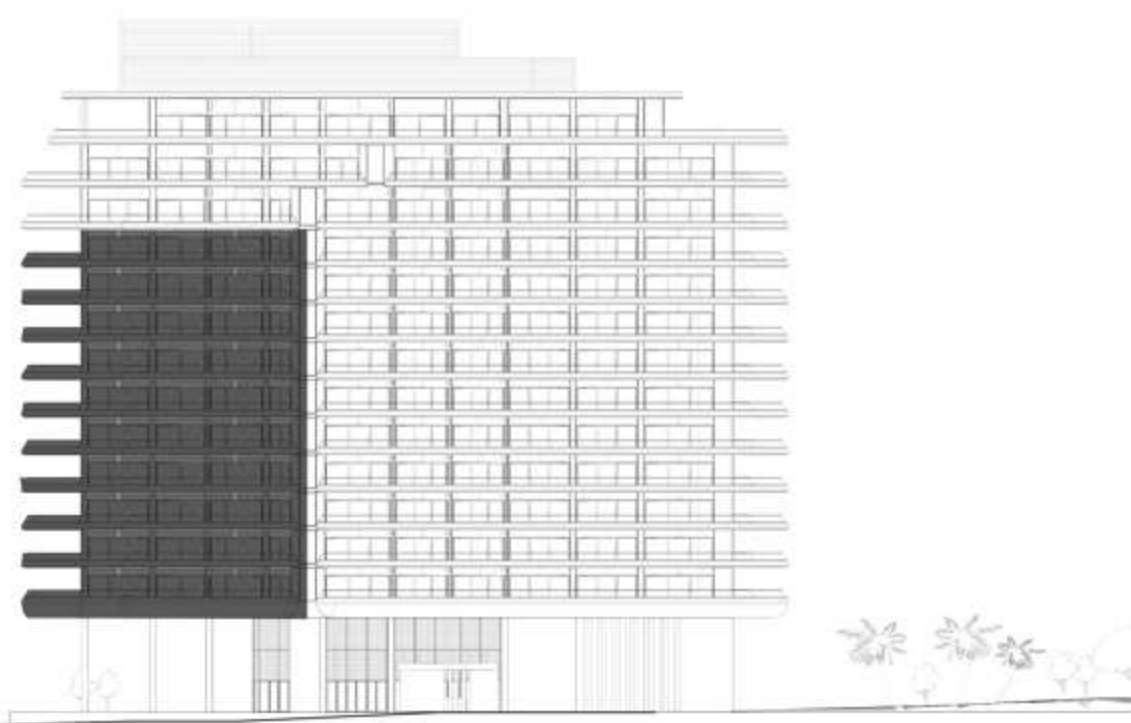
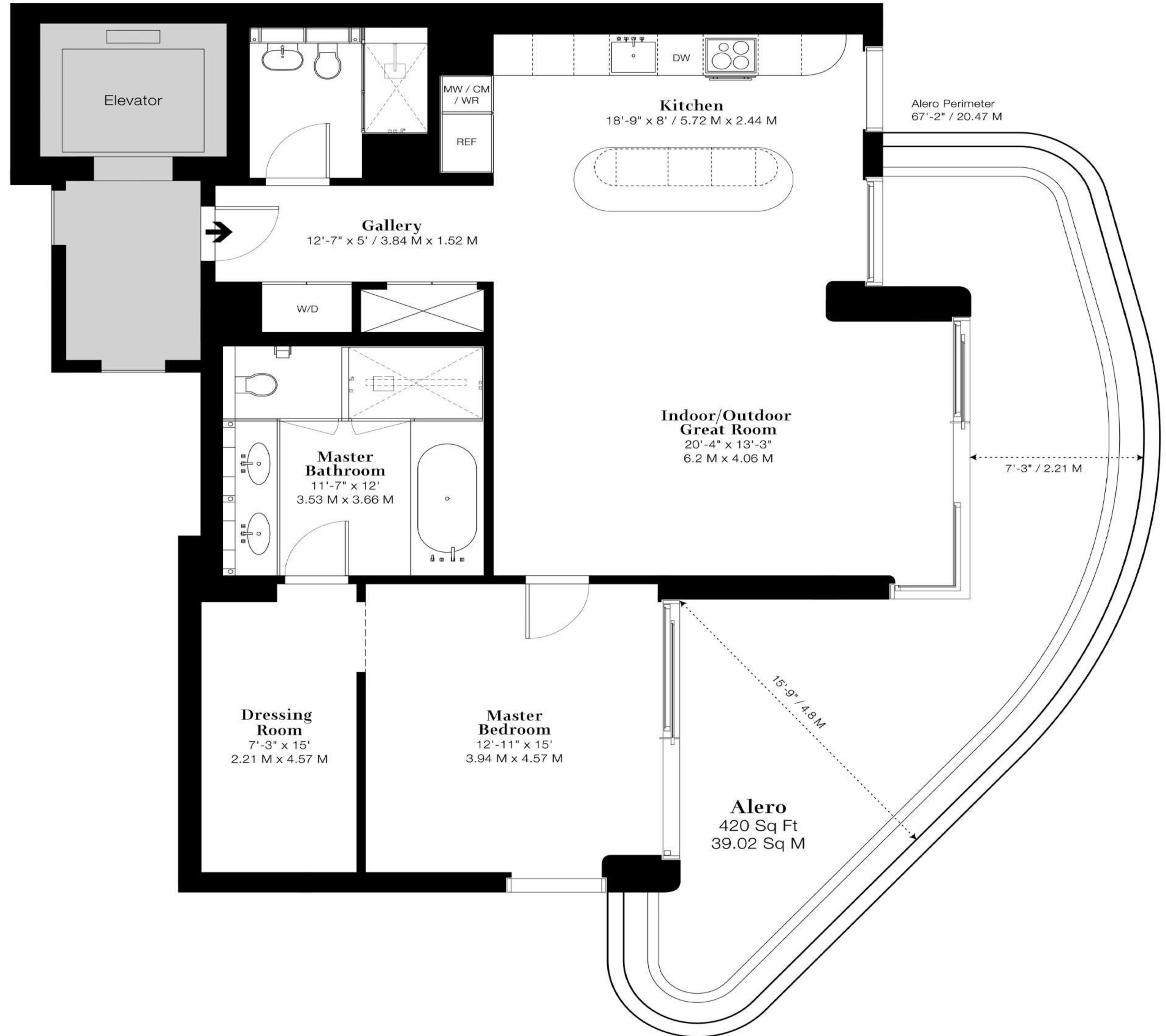
# RESIDENCE D

1 BEDROOM / 2 BATHROOMS

Total Living: 1,727 Sq Ft / 160.4 Sq M

Indoor: 1,307 Sq Ft / 121.4 Sq M

Alero: 420 Sq Ft / 39.0 Sq M



← Bay

Beach →



This is not an offer to sell, or solicitation of offers to buy, the condominium units in states where such offer or solicitation cannot be made. This offering is made only by the offering documents for the condominium and no statement should be relied upon if not made in the offering documents. Stated dimensions are measured to the exterior boundaries of the exterior walls and the centerline of interior demising walls and in fact vary from the dimensions that would be determined by using the description and definition of the "Unit" set forth in the Declaration (which generally only includes the interior airspace between the perimeter walls and excludes interior structural components). For your reference, the area of the Unit, determined in accordance with those defined unit boundaries, is 5,833 sq ft. Note that measurements of rooms set forth on this floor plan are generally taken at the greatest points of each given room (as if the room were a perfect rectangle), without regard for any cutouts. Accordingly, the area of the actual room will typically be smaller than the product obtained by multiplying the stated length times width. All dimensions are approximate and may vary with actual construction, and all floor plans and development plans are subject to change.